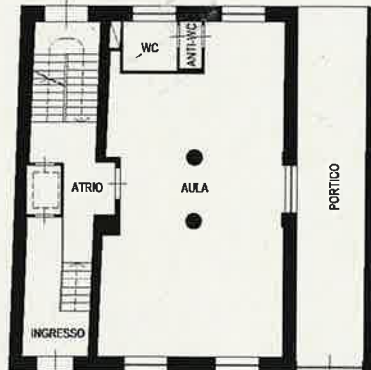




PIANO INTERRATO (S1)
h=2.70m



PIANO TERRA
h=2.80m



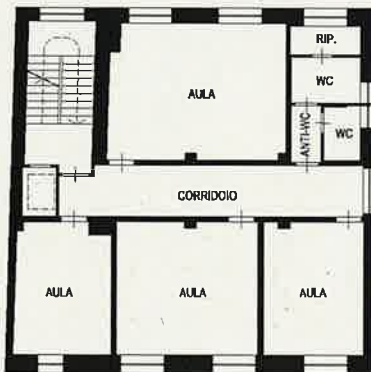
PRIMO PIANO
h=2.80m



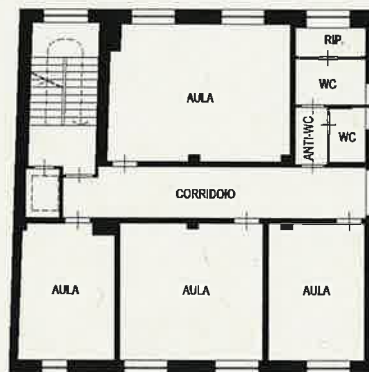
locali in uso esclusivo MGV
Räume in ausschließliche Nutzung



locali in uso comune
Räume in Mitbenutzung



SECONDO PIANO
h=2.80m



TERZO PIANO
h=2.80m



SOTTOTETTO
h=1.50+3.30m

